



# Available Industrial Site

## Matrix Park - Lot 14

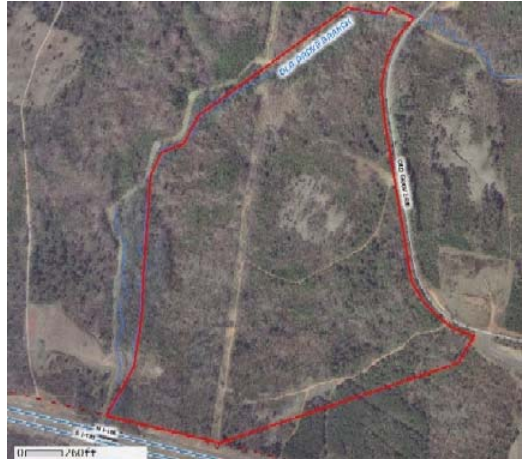
### 100.9 Acres

### Location

**LOCATION:** Old Grove Rd approx. 1800' S of Matrix Pkwy  
**COMMUNITY:** Greenville, SC  
**COUNTY:** Greenville

### Description

**MINIMUM ACRES:** Acres  
**MAXIMUM ACRES:** 100.9 Acres  
**SUBDIVIDE:** Yes Acres  
**CURRENT USE:** Vacant  
**SURROUNDING AREA** Developing Business & Technology Park  
**TOPOGRAPHY:** 832' to 908'



### Taxes and Zoning

**ZONED INDUSTRIAL** Yes  
**RESTRICTIONS:** I-2 (Industrial Park) & Covenants  
**TAXMAP:** 409-1-1.3 (portion)  
**TAX DISTRICT:** 100  
**MILLAGE RATE:** 267.40 (2010)  
**FOREIGN TRADE ZONE** No  
**FIRE DISTRICT:** South Greenville  
**FIRE RATING:** 3

### Transportation and Access

**INTERSTATE:** I-185 2 Miles  
**ALT. HIGHWAY:** I-85 4 Miles  
**PRIMARY AIRPORT** GSP International Airport 15 Miles  
**CIVIL AIRPORT:** SC-TAC 2 Miles  
**PORT:** Charleston 210 Miles  
**RAIL:** None

### Utilities

**WATER:** Greenville Water System 12"  
**GAS:** Piedmont Natural Gas 6"  
**SEWER:** Metro / ReWa 18"  
**ELECTRICITY:** Duke Energy

### Sales

**MIN. PRICE ACRE:** \$24,000  
**MAX. PRICE PER ACRE**  
**LEASE:** N/A  
**SOURCE:** Jerry Howard  
 Greenville Area Development Corporation  
 864-235-2008

### Comments

Located within the 1,400-acre Class-A Matrix Park, this site has easy access to the interstates. For park info, visit [www.thematrixpark.com](http://www.thematrixpark.com). Total asking price is \$2,415,000.

#### For Additional Information Contact:

Greenville Area Development Corporation  
 233 North Main, Suite 250  
 Greenville SC 29601

Phone: 864-235-2008  
 Fax: 864-235-9030  
 E-Mail: [jhoward@greenvillecounty.org](mailto:jhoward@greenvillecounty.org)



No warranty or representation, expressed or implied, is made regarding the accuracy of this data, and same is subject to omissions, errors, and changes. This report is in accordance with the terms and agreements of the InfoMentum License Agreement. This information was compiled by the SC Dept. of Commerce, the SC Appalachian Council of Governments and the Greenville Area Development Corporation

ID: S196G

LAST UPDATE: 12/29/2010

# Matrix Park – Lot 14 Site Location Map

