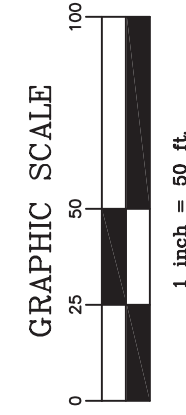


NOTICE  
THIS DRAWING IS THE PROPERTY OF H2L CONSULTING ENGINEERS. IT IS NOT TO BE REPRODUCED, COPIED, OR TRANSMITTED IN ANY FORM OR BY ANY MEANS, ELECTRONIC OR MECHANICAL, WITHOUT THE WRITTEN AUTHORIZATION OF H2L CONSULTING ENGINEERS. ANY UNAUTHORIZED USE OR REPRODUCTION OF THIS DRAWING IS PROHIBITED AND WILL BE PROSECUTED TO THE FULL EXTENT OF THE LAW.



- Existing Contours
- Proposed Contours
- Exist. Storm Drain
- New Storm Drain
- Exist. Sanitary Sewer
- New Sanitary Sewer
- Exist. Water Line
- New Water Line
- Exist. Fire Protection
- New Fire Protection
- Power (Overhead)
- Power (Underground)
- Phone (Underground)
- Exist. Fence
- New Fence
- Silt Fence
- Flow Path
- Exist. Culvert, <48"
- Water Meter
- Riprap Apron
- Fire Hydrant
- Utility Pole
- Exist. Valve
- Exist. Manhole
- New Manhole
- Exist. Lamp
- New Lamp
- Concrete
- Stone Check



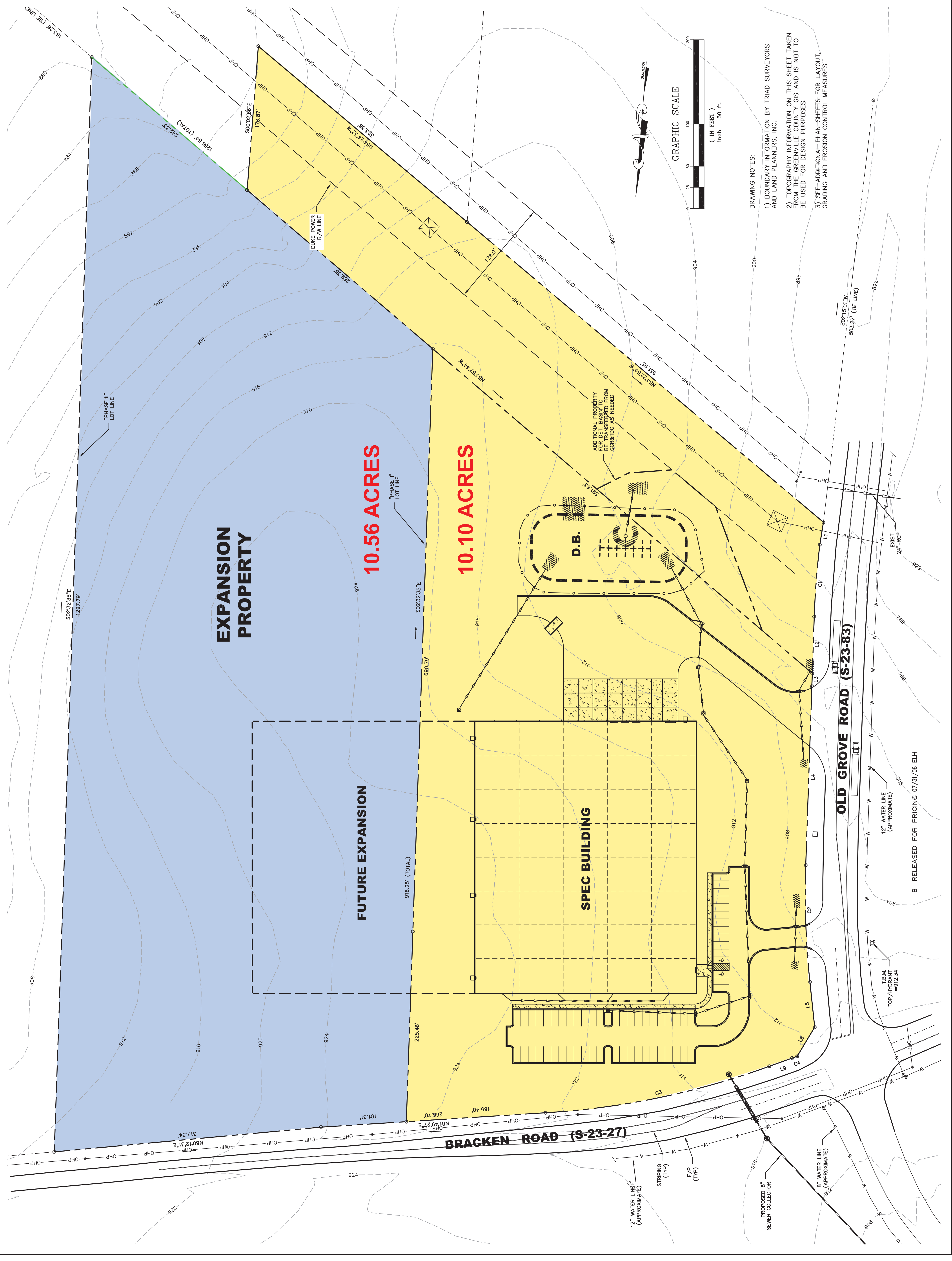
No.	Revision	Date	By
B	RELEASED FOR PRICING	07/31/06	ELH
A	SUBMITTED FOR COUNTY REVIEW	07/31/06	ELH

**Matrix Lot #2**

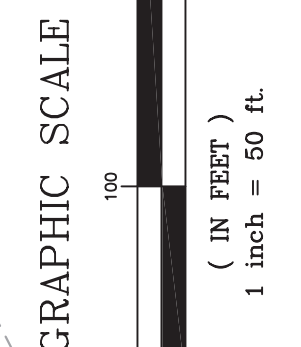
**OVERALL SITE PLAN**

Date: 07/25/06 Approved By: ELH  
Drawn By: ELH Checked By: WBS  
Project No: 2006-021

**C-1**



DRAWING NOTES:  
1) BOUNDARY INFORMATION BY TRIAD SURVEYORS AND LAND PLANNERS, INC.  
2) TOPOGRAPHY INFORMATION ON THIS SHEET TAKEN FROM AERIAL PHOTOGRAPHS AND IS NOT TO BE USED FOR DESIGN PURPOSES.  
3) SEE ADDITIONAL PLAN SHEETS FOR LAYOUT, GRADING AND EROSION CONTROL MEASURES.



B RELEASED FOR PRICING 07/31/06 ELH